

Commander Intersects 50 m of 0.24% CuEq in Hole BU22-01 and 83.5 m of 1.08 g/t Au in hole BU22-02 in Inaugural Drill Program at Burn Porphyry Copper Property, British Columbia

Figure 1: Location Map

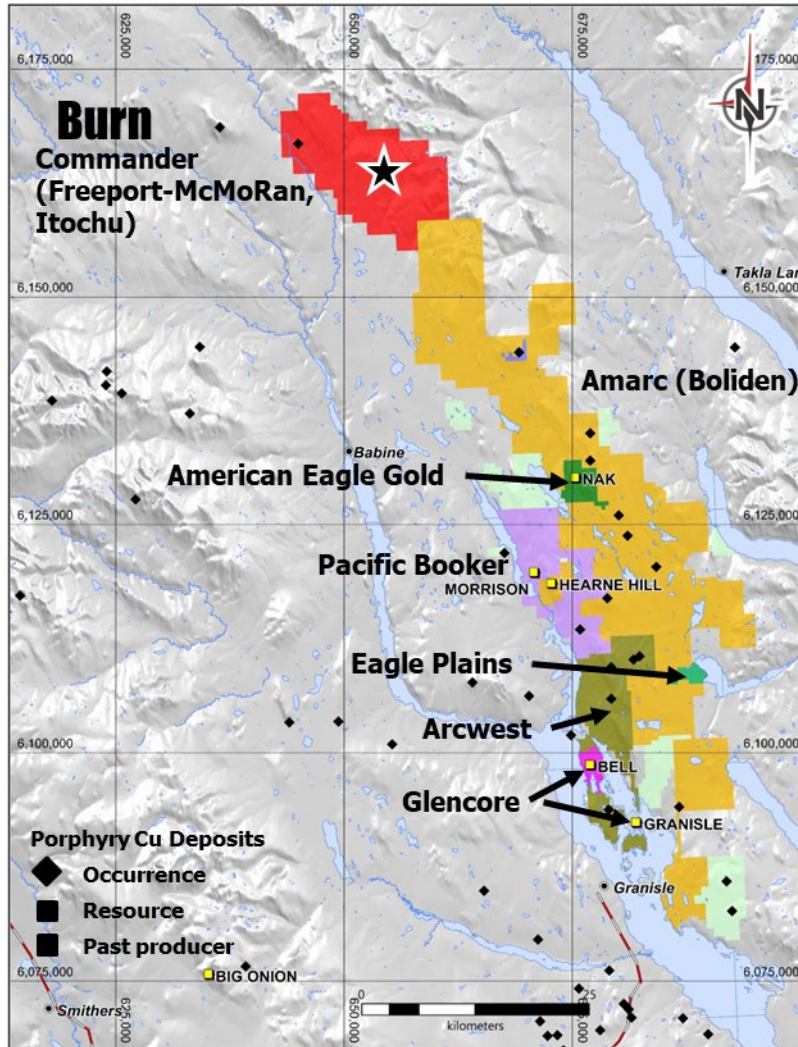


Figure 2: Drill Plan Projected on Total Field Magnetics and Au Soil Geochemistry

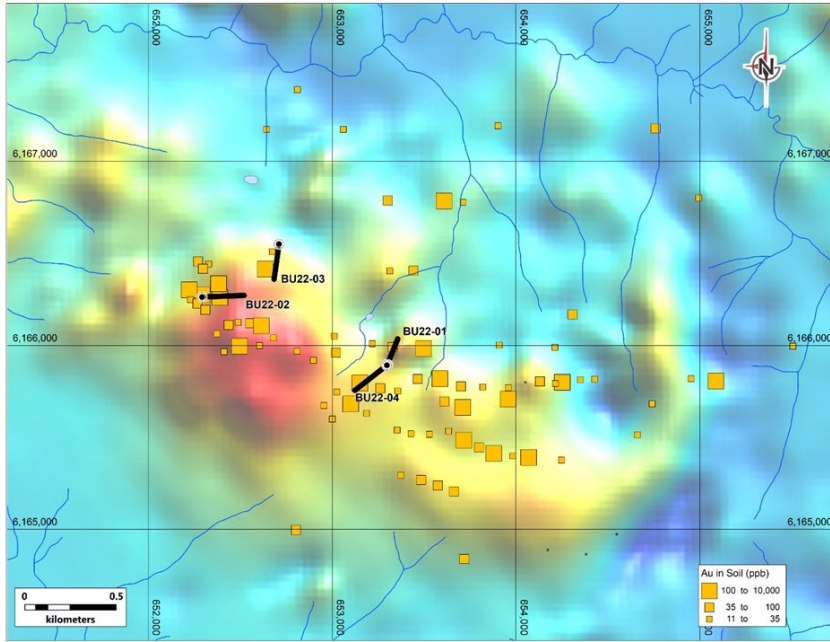


Figure 3: Section BU22-01, BU22-04

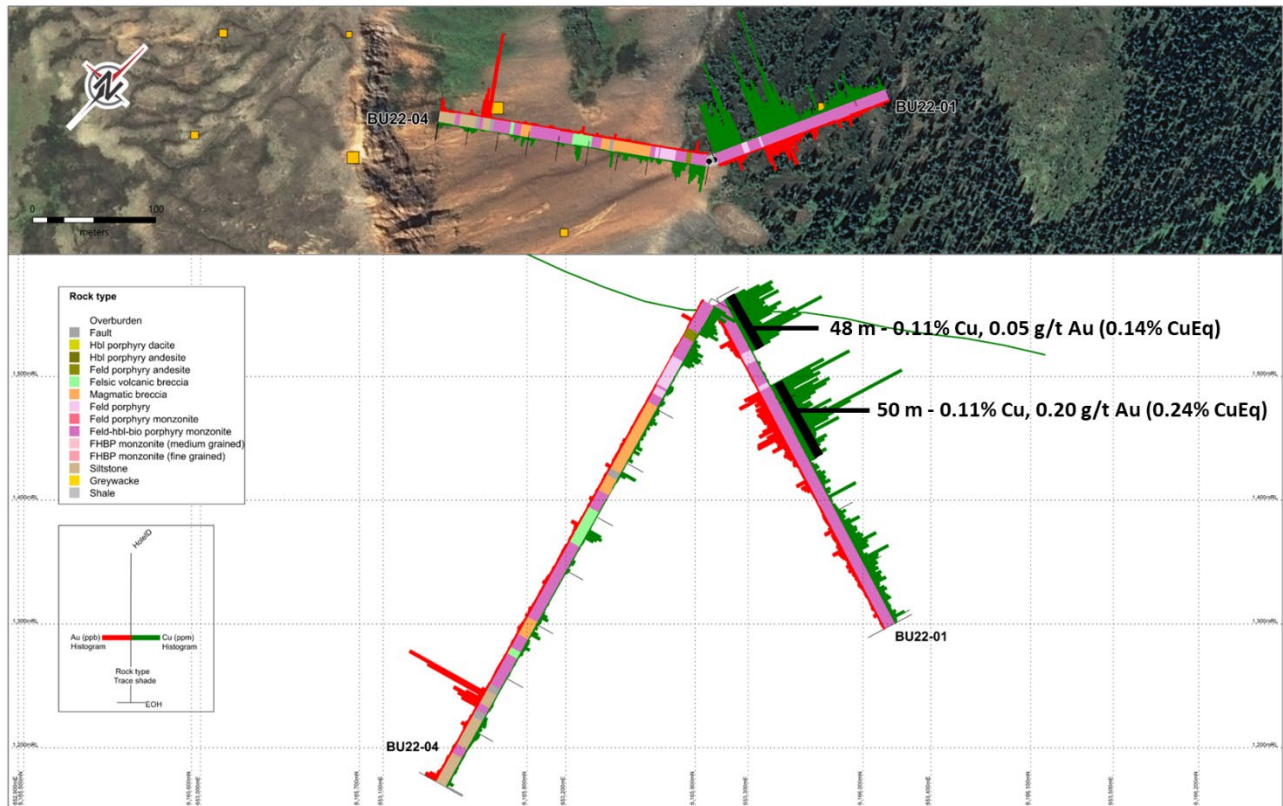


Figure 4: Section BU22-02

