



COMMANDER
RESOURCES LTD.
TSX.V : CMD



FOCUSED ON COPPER & GOLD IN CANADA

THREE DRILL READY PROJECTS

1. **ADVANCING THE NEW PORPHYRY COPPER-GOLD DISCOVERY AT BURN IN BRITISH COLUMBIA**
Grassroots discovery in the prolific Babine Copper Belt with partner Freeport-McMoRan
2. Drilling planned for the **October Dome** Copper-Gold project in BC. Brownfields location midway between Mt. Polley and QR Mines
3. Drilling planned for 2025 at **Sabin** Project, Ontario. 20 km of VMS horizon , historical high grade drill intercepts, within the Sturgeon lake mineral District

MANAGEMENT & DIRECTORS

Robert Cameron, President & CEO, Director
Over 35 years in exploration including manager of exploration in Canada for Freeport McMoRan, former President and CEO of Valley High Ventures and Mining Analyst with Research Capital.

Steve Wetherup, VP of Exploration
Over 25 years of global experience including work with Phelps Dodge Corporation of Canada.

Brandon Macdonald, B.Sc., MBA, Chairman
Finance and mining professional with background in junior company management, governance and financing.

Kelly Bateman, Director

Vanessa Pickering, Director

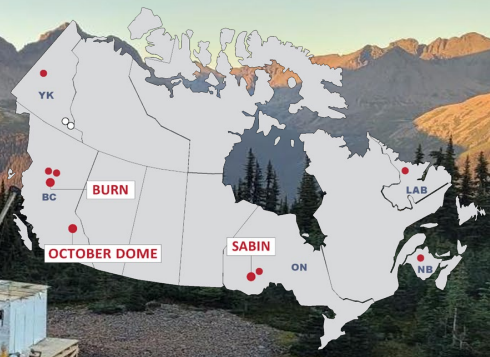
Eric Norton, Director

David Watkins, Director

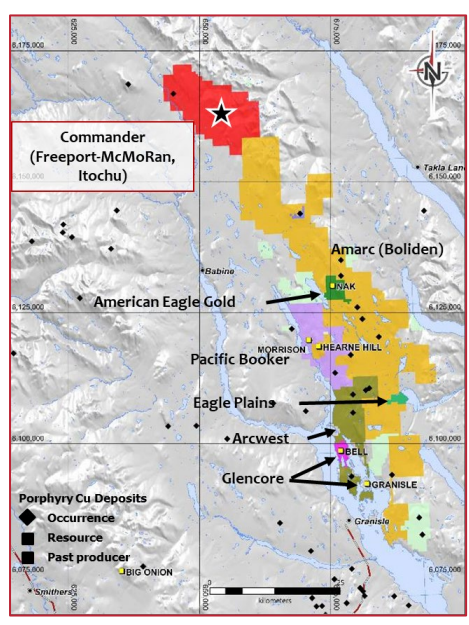
Common Shares Issued	43,683,241
Options	3,025,000
Warrants	1,937,500
Fully Diluted	48,645,741
Market Cap (Jan, 2024)	\$2,600,000



**COMMANDER
RESOURCES LTD.**
TSX.V : CMD

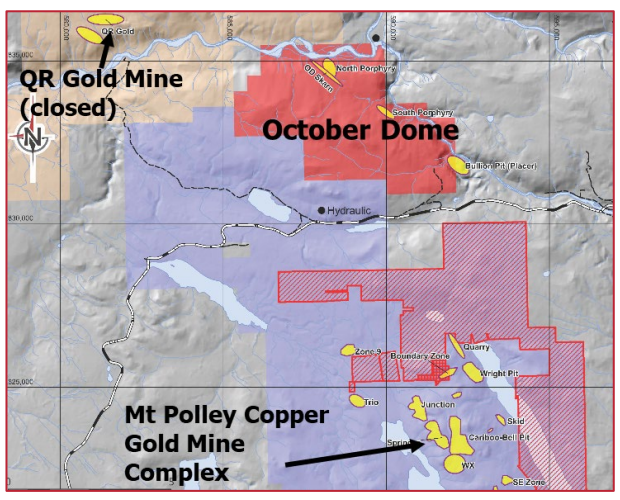


BURN COPPER/GOLD DISCOVERY




- Burn represents a new greenfields porphyry copper and gold discovery
- 1,513 metre inaugural drill program tested a large, exposed, quartz-magnetite stockwork zone, anomaly and elevated gold in soils
- Hole BU22-01 returned 50 m @ 0.11% Cu and 0.20 g/t Au (0.24% CuEq) within a 130 m interval
- Hole BU22-02 returned 149.5 m @ 0.66 g/t Au including 83.5 m @ 1.08 g/t Au
- 4403 m drilled in 2023
- Deep porphyry target identified and gold zone expanded

OCTOBER DOME COPPER/GOLD PROJECT



- Centrally located mid-way between the Mt. Polley mine and the QR past producing mine (Dome, Kinross) and west of the large Spanish Mountain gold deposit
- Composite target of QR-style gold skarns and Mt Polley-style Alkalic porphyry Cu-Au



 @CommanderCMD
info@commanderresources.com

Robert Cameron, P.Geo., is the Qualified Person responsible for the technical content of this brochure